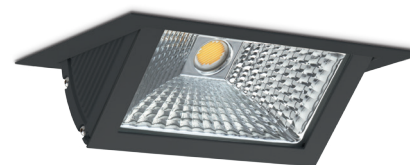
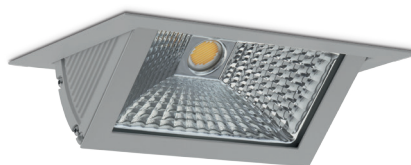
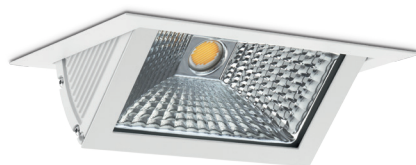


downlight

downlight

Downlight

montana LED 2



długość / length / Länge

230,0mm

otwór montażowy/cut out/Montageloch

135 x 215mm



szerokość / width / Breite

151,0mm

wysokość / height / Höhe

95,0mm

PL

Charakterystyka:

oprawa typu downlight do wbudowania w sufitach podwieszanych.

Opis techniczny:

obudowa oprawy wykonana z aluminium, szklana osłona.

Montaż:

w suficie przy pomocy sprężynek /w zestawie/.

Zastosowanie:

obiekty handlowe, biurowe, pomieszczenia reprezentacyjne, galerie, muzea, salony samochodowe.

EN

Characteristics:

down-light fitting to build-in in under-slung ceilings.

Technical description:

housing of the fitting made from aluminium, glass shield.

Mounting:

in the ceiling with catches (included).

Application:

commercial and office facilities, elegant halls, galleries, museum, car showrooms.

DE

Charakteristik:

Leuchte vom Typ Downlight zum Einbauen in Hängedecken.

Technische Beschreibung:

Gehäuse der Leuchte aus Aluminium, Glasschirm.

Montage:

in der Decke mittels Haltern (im Set).

Anwendung:

Handels- und Büroobjekte, Repräsentationsräume, Galerien, Museum, Autohaus.

MONTANA LED 2 - wersja dostępna na zamówienia / only on request / Version auf Anfrage verfügbar

| type | product | □ ■ ■ | | | (Ra) | | ☀️ | | | | | △ | 💡 | lm | |
|-----------|---------------|-------|------|-------|------|-----|-------|-------|-------|-------|-------|----|-----|---------|------------|
| | | white | grey | black | >80 | >90 | 2500K | 2700K | 3000K | 3500K | 4000K | | | | 5000K |
| downlight | MONTANA LED 2 | 1 | 2 | 3 | 8 | 9 | 25 | 27 | 30 | 35 | 40 | 50 | 50° | max 45W | max 6210lm |
| D | ML2 | 1 | 2 | 3 | 8 | 9 | 25 | 27 | 30 | 35 | 40 | 50 | 50 | — | — |

przykład zamawiania/ order example / Beispielbestellung

| | | | | | |
|---|-----|---|---|----|----|
| D | ML2 | 2 | 9 | 35 | 50 |
|---|-----|---|---|----|----|

przykład oznaczenia zamawianego produktu / example code / Beispielcode: **DML2293550**

| akcesoria / accessories / Zubehör | szyba/glass/Glas | mleczna/opal/Milch | mrożona/frozen/Eingefroren |
|-----------------------------------|------------------|--------------------|----------------------------|
| | 1 | 2 | 3 |

przykład oznaczenia zamawianego produktu / example code / Beispielcode: **DML2293550 - 1**

CLF

montana LED 2



MONTANA LED 2



| index | (Ra) | ☀️ | ⚙️ | △ | 💡 | lm | index | (Ra) | ☀️ | ⚙️ | △ | 💡 | lm | kg |
|------------|------|-------|-----|---------|------------|------------|-------|-------|-----|---------|------------|------|----|----|
| DML2x83050 | >80 | 3000K | 50° | max 45W | max 5980lm | DML2x93050 | >90 | 3000K | 50° | max 45W | max 4245lm | 1,50 | | |
| DML2x84050 | >80 | 4000K | 50° | max 45W | max 6210lm | DML2x94050 | >90 | 4000K | 50° | max 45W | max 4420lm | 1,50 | | |

kolor / color / Farbe

DML2..84050

↑

- 1 biały/white/weiss
- 2 szary/grey/grau
- 3 czarny/black/schwarz

follow the light



SHOPPING MALL



SUPER MARKETS



OFFICE



MUSEUM



CAR SHOWROOMS